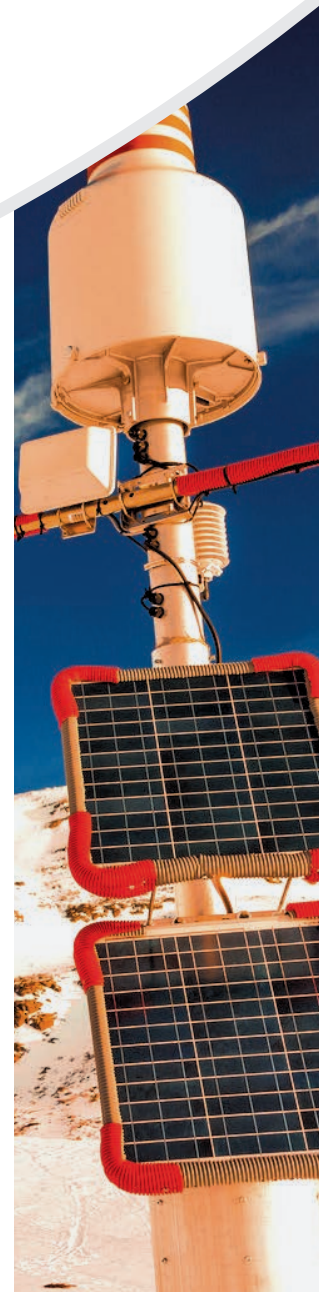


ARTS

ENERGY



SOLAR

YOUR ENERGY SOLUTIONS FOR DEMANDING APPLICATIONS

40 years of expertise in many battery technologies

SOLAR STREET LIGHTING:

- Residential
- Pedestrian roads
- Roads



SOLAR ROAD & CITY SIGNALLING:

- Billboards
- Road signalling
- City signalling



SOLAR M2M / SENSORS:

- Detection of hazardous gas
- Water level of rivers or lakes
- Meteorological



SOLAR BUOYS:

- Marine
- Airports



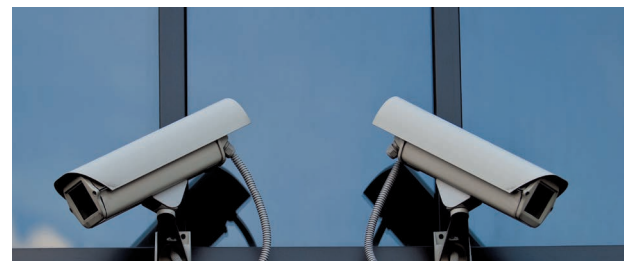
SOLAR HOME AUTOMATION:

- Roller shutter blind
- Automatic portal



SOLAR CAMERA SYSTEM:

- Video-surveillance
- Vehicules counting



WE WILL ASSIST YOU TO SELECT
THE RELEVANT BATTERY SOLUTION

We manage complexity for your simplicity

LI-ION



Li-ion:
HIGH ENERGY DENSITY FOR MODERATE CLIMATES

FEATURES

- High energy density
- Lower self-discharge

BENEFITS

- Smaller battery
- Very low consumption applications

NI-MH



Ni-MH cells:
SMALL AND SIMPLE

FEATURES

- Large temperature range
- Robust vs charging

BENEFITS

- Exceptional behavior in extreme climates
- Direct connection to the solar panel (no controller)

NI-MH



Ni-MH packs:
EXCEPTIONAL DURABILITY IN EXTREME CLIMATES

FEATURES

- Large temperature range
- Exceptional durability
- Non-flammable

BENEFITS

- Exceptional behavior in extreme climates
- Lower TCO
- No transportation constraints



SAFETY



RELIABILITY



TCO



PERFORMANCES



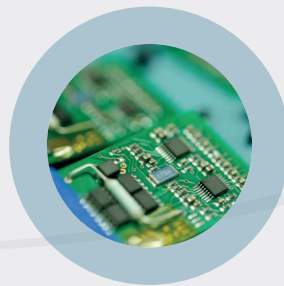
AUTONOMY

We are a long term partnership company



TCO

ATTRACTIVE
TOTAL COST FOR
OWNERSHIP
THANKS TO
VERY LONG LIFE
DURATION



BMS

BATTERY
MANAGEMENT
SYSTEM
OPTIMISED FOR
LONGER BATTERY
DURABILITY



EMS

OPTIMISATION
OF ENERGY
CONSUMPTION
AND MANAGEMENT



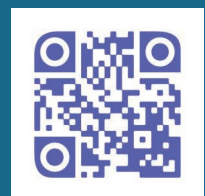
CO-DEVELOPMENT

INOVATIVE AND
PROFITABLE
CO-DEVELOPPED
SOLUTIONS

**HIGH QUALITY PRODUCTS, MEETING DEMANDING
AND CRITICAL PERFORMANCE AND SAFETY**



10, rue Ampère
Zone Industrielle - 16440 Nersac - France
Tél. +33(0)5 45 90 35 52 / 35 53
contact@arts-energy.com



www.arts-energy.com